



# Frimley Church of England Junior School

**Information for prospective families:  
October 2024**



***Learning together we grow***

# Aims ...

- ▶ To explain what Frimley has to **offer your child**
- ▶ To explain how we **support your child at transition** and throughout KS2

# Vision

- ▶ Our collective vision for Frimley Church of England School is “**Love your neighbour as you love yourself**”. This permeates everything we do.
- ▶ We set ourselves **high standards**
- ▶ Children go on to **succeed in secondary school** and play their **full part in society**.
- ▶ Our children **love learning** and they look after, **respect and value** each other.



***Learning together we grow***

# School Aims

- ▶ Children are at the **heart of everything** we do.
- ▶ The **Christian principles** which underpin our school provide values and **moral direction** for children to develop the skills they need to become **well-rounded citizens**.
- ▶ As a **learning community**, we live by our values, and we ask **parents to share** in that.
- ▶ We aim for all our children to be **happy at school** and leave us prepared for their next stage in life as **confident, independent learners**, with **high self-esteem** and a sense of **responsibility and tolerance** in all they do.
- ▶ We want every child to be a **good citizen** and a good communicator. We want them to **challenge themselves** and be **highly motivated** to achieve their best.



***Learning together we grow***

# Values

Through Christian values of

**Love**

**Honesty**

**Forgiveness**

... we encourage children to enjoy learning for life and to take pride in all they do

We encourage all of our children to reflect on what they experience, and to consider how this affects them, their lives, their thinking, their learning and their behaviour.





The  
Prospect  
Trust

# THE PROSPECT TRUST

- ▶ The Prospect Trust is a **dynamic family of local academies** who enable all learners to make a **positive contribution to their community**
- ▶ The vision is to provide **outstanding education** within a collaborative family of academies, driving **academic excellence**, **inclusion** and opportunity for all.

What has been developed so far?

- ❖ Technology
- ❖ LRC - Learning Resource Centre
- ❖ Transition - smoothing out the cliff edges
- ❖ Teaching and Learning strategies: Mastery Approach



***Learning together we grow***

# STRATEGIC PRIORITIES

2024-2026

- ▶ Every learner is provided with opportunities to achieve **high success rate**
- ▶ Every teacher is confident in teaching **disadvantaged learners** and delivers a curriculum that enables all to **make maximum progress**
- ▶ Reduce the number of incidents of poor behaviour choices beyond the classroom by having **high expectations at all times**
- ▶ All children **actively participate** in all lessons
- ▶ All members of the school community are provided with appropriate and timely support, in order to **support their well-being and to help them flourish**
- ▶ The school is visible within, and open to, **the local community**
- ▶ All **leaders take responsibility** and are accountable for **school wide improvement**
- ▶ Establish wider and global links in order to develop all members of the school community as **global citizens and courageous advocates**



***Learning together we grow***



# A talk from our Head Pupils: Isla and Abi

What we think about our school....



***Learning together we grow***

# Why Frimley?

"Love flows through the school with everyone welcomed, accepted and celebrated."  
SIAMS, Dec 23

- ▶ Caring family ethos
- ▶ All children are known as individuals
- ▶ Children settle quickly when they join our school
- ▶ We have unrelenting high standards in everything we do



***Learning together we grow***

# Outcomes (May 2024)

	Reading	Writing	Maths	SPaG	Combined
Frimley	96%	87%	94%	89%	87%
Surrey	80%	74%	78%		65%
National	74%	72%	73%	72%	60%

	Reading	Writing	Maths
Average score	110		108
Progress Measure	+5.64	+4.85	+4.57

# What the school has to offer: **THE ETHOS**

*"Love your neighbour as yourself' is a golden thread throughout the work of the school. All deeply value being part of the school and the wider trust*

SIAMS Dec 23

- ▶ We provide a safe and nurturing learning environment for everyone
- ▶ We actively encourage pupil involvement
- ▶ We live by a set of core Christian values which underpin everything we do (life skills)
- ▶ All children are encouraged to develop as a 'Frimley learner' (learning skills)
- ▶ Our 'character education' runs through the whole of our curriculum

*There's no pressure to get everything right because that's part of learning and we do it all together*

Year 6 pupil, Sep 2024

*Everyone is kind and respectful towards each other*

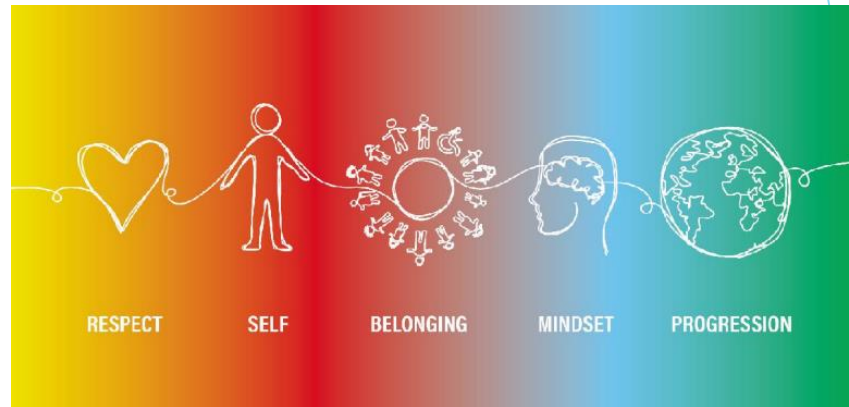
Year 4 pupil, Sep 2024

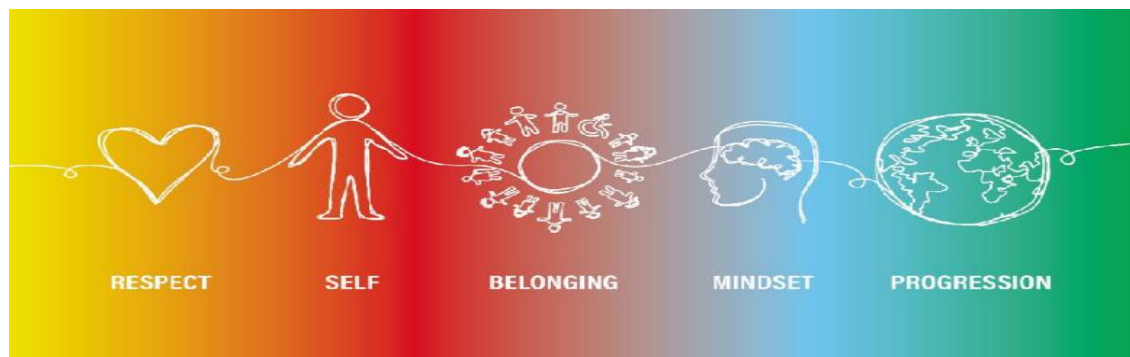


***Learning together we grow***

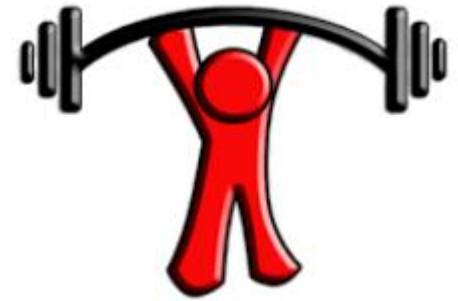
# What the school has to offer: **THE FRIMLEY LEARNER:**

Frimley Learner Passport captures each child's journey and growth during their time at Frimley; it supports the development of positive learning behaviours; promotes self-reflection and encourages children to set targets and goals for their future self.





- ▶ Goal setting and reflection
- ▶ Challenges
- ▶ Celebration: capture achievements and successes
- ▶ Careers: prospects and ambitions for the future
- ▶ Strengths
- ▶ Well being - how do they look after themselves?





# What the school has to offer:

## THE STAFF

- ▶ A dedicated, hardworking team committed to encouraging your child to develop his/her talents and make maximum progress during their time here at Frimley
- ▶ A multi-talented, enthusiastic team with a good mix of experience
- ▶ 2 DHTS: 'Pastoral' and 'Teaching and Learning'
- ▶ Specialist French, Music and Phonics teaching
- ▶ A highly skilled team of support staff
- ▶ A Family Link Worker

"Adults strive for pupils to achieve highly. Pupils respond well to adults' high aspirations." *Ofsted, March 24*

*The teachers want us to be the best we can be*

*Year 6 pupil, Sep 24*



# What the school has to offer:

## THE CURRICULUM

- ▶ The learning journey is organised into small, purposeful, well-structured and engaging steps
- ▶ Carefully sequenced “Crucial Learning” statements promote the development of progressive skills and knowledge
- ▶ We teach children how to learn and how to become life-long learners, through a mastery approach to teaching
- ▶ Ongoing retrieval opportunities
- ▶ We aim to develop a love of learning across all subjects
- ▶ Our teaching is child-centred
- ▶ We promote excited & enthusiastic thinkers
- ▶ Our curriculum allows children to develop as communicators & problem solvers
- ▶ We offer a range of enrichment activities including: outdoor learning, gardening, pond dipping, cookery, photography, art

"The school has designed a broad curriculum which identifies the important knowledge that pupils must remember in all subjects.

*OFSTEd March 24*





# What the school has to offer...

## FACILITIES

- ▶ Well equipped, spacious classrooms
- ▶ Interactive Whiteboards in all classrooms
- ▶ iPads for in-class use
- ▶ Learning Resource Centre (LRC)
- ▶ A modern 'Hub' of learning in the main school building
- ▶ Break out areas for each year group for 1:1/group work/intervention sessions
- ▶ Nurture Pod
- ▶ Phonics Room
- ▶ A dining room with a variety of choices & salad bar



# What the school has to offer:

## THE GROUNDS

*We do lots of sport which is good for our physical and mental health*  
Year 4 pupil Sep 24

- ▶ Extensive playing fields for track and field events, and a range of sports
- ▶ Fenced all-weather games area for netball and tennis and playtime games etc
- ▶ Outdoor Gym
- ▶ Running track
- ▶ Well-being Zone
- ▶ An astro-turf playing surface
- ▶ Table tennis tables
- ▶ Science garden and pond
- ▶ Nature areas: woodland garden



# Uniform and Behaviour



*"Pupil's behaviour is exemplary and it's rare to come across such articulate children"*  
Safeguarding Audit Sep 22

- ▶ Uniform gives a sense of belonging - our logo was designed by our children
- ▶ Positive behaviour management based on **praise and rewards** - leading to class and individual rewards
- ▶ Our approach includes a strong focus on **Restorative Conversations**
- ▶ **Positive Playtimes** with structured activities
- ▶ We have high expectations relating to children's behaviour
- ▶ Any child found to be **bullying** others will be dealt with positively and firmly in line with school policy

# What **your** child will benefit from:

- ▶ Yearly opportunities for visits and 'wow days' linked to the curriculum; previous experiences have included Wisley, Explore Activity Centre, Butser Farm.
- ▶ Two residential trips: Leeson House for 3 amazing days in year 4, and 5 days on an activity-based residential for year 6 pupils (PGL)
- ▶ Close link to the 2 other Academies in the Prospect Trust: visits and staff expertise
- ▶ Excellent sports provision with indoor PE and outdoor games
- ▶ Sports League competitions
- ▶ An established house structure where all children belong to one of our 4 Houses: Curie, Einstein, Galileo or Newton
- ▶ An extensive programme of before school, lunch and after school clubs (led by both school staff and external providers)
- ▶ Opportunities for children to take on increased responsibility as they move through the school
- ▶ Outdoor learning
- ▶ An introduction to Careers Education





# Other Frimley experiences!

- ▶ Whole school charity fundraising activities: we select a chosen charity each year. Last year, supported Breck Foundation. This year we are supporting Young Lives Vs Cancer
- ▶ School Productions
- ▶ Pupil Voice: Y6 Ambassadors, Well-being team, Learning Team, Sports Team, Worship Team, Digital Leaders, Community Crew, Eco Team
- ▶ The Bikeability programme
- ▶ Run-a-mile (on our running track)
- ▶ Morning club and Complete Kidz (wrap-around childcare running from 7.50am - 6pm daily)
- ▶ Strong diocesan links
- ▶ Strong community links
- ▶ Termly Enrichment days



“Pupils thrive at this school. Families appreciate the strong sense of community”  
OFSTED March 24

# We actively encourage Parental engagement:

- ▶ Parents welcome in to school
- ▶ Help in class
- ▶ Regular Parent Forums
- ▶ Harvest, Easter, Carol service
- ▶ Christmas play (y3), Leavers play (y6)
- ▶ Fortnightly newsletter
- ▶ Meet the teacher and other curriculum evenings throughout the year
- ▶ Opportunity for daily contact with staff before and after school
- ▶ School website for information: [www.frimley.surrey.sch.uk](http://www.frimley.surrey.sch.uk)
- ▶ Twitter: @frimleyjunior
- ▶ Termly Parent/teacher meetings



*Your school is so warm  
and welcoming- and  
that's even clear from  
your website.  
Safeguarding audit Sep 22*

# Transition: how do we support children?

- ▶ Regular visits from our staff to Key Stage 1 settings throughout the academic year
- ▶ Teachers **visit** the main partner schools in the Summer term to meet the children
- ▶ **Discussion** with the Year 2 class teachers
- ▶ Many children from the **infant** schools visit Frimley for activity afternoons, **Plays** and FPTA events
- ▶ **Information** pack provided for all parents prior to their child starting at Frimley (Parent handbook)
- ▶ **Induction Days in the Summer term** allow new pupils to meet their teachers and other pupils and parents to meet teachers
- ▶ 'Meet the Teacher' evening in **September**
- ▶ All classes are of mixed ability and **friendship groups** determined by the Infant Schools are used to position pupils.



**Close communication is the key to success**

***Learning together we grow***

# Summary

- ▶ Frimley is a **caring, inclusive** school
- ▶ We aim to develop **confident, caring** children
- ▶ In all classes, high **quality teaching challenges and inspires every child**
- ▶ We help children develop habits, attitudes and skills to be **lifelong learners**
- ▶ **Our children are equipped to face life's challenges** calmly, confidently and creatively
- ▶ We provide a range of opportunities for every child to **develop talents and shine**
- ▶ **We have high expectations** of all
- ▶ **Our Key Stage 2 outcomes** regularly exceed both National and Surrey results
- ▶ **We prepare children** for life at secondary school and beyond and are part of **The Prospect Trust**



***Learning together we grow***





# What next?

- Attend one of our tours, led by the Ambassadors
- Apply online on the Surrey CC website by **15<sup>th</sup> January 2025**
- Any questions? Please email: [info@frimley.surrey.sch.uk](mailto:info@frimley.surrey.sch.uk)