

LEESON




Follow our #LeesonAdventure24 on






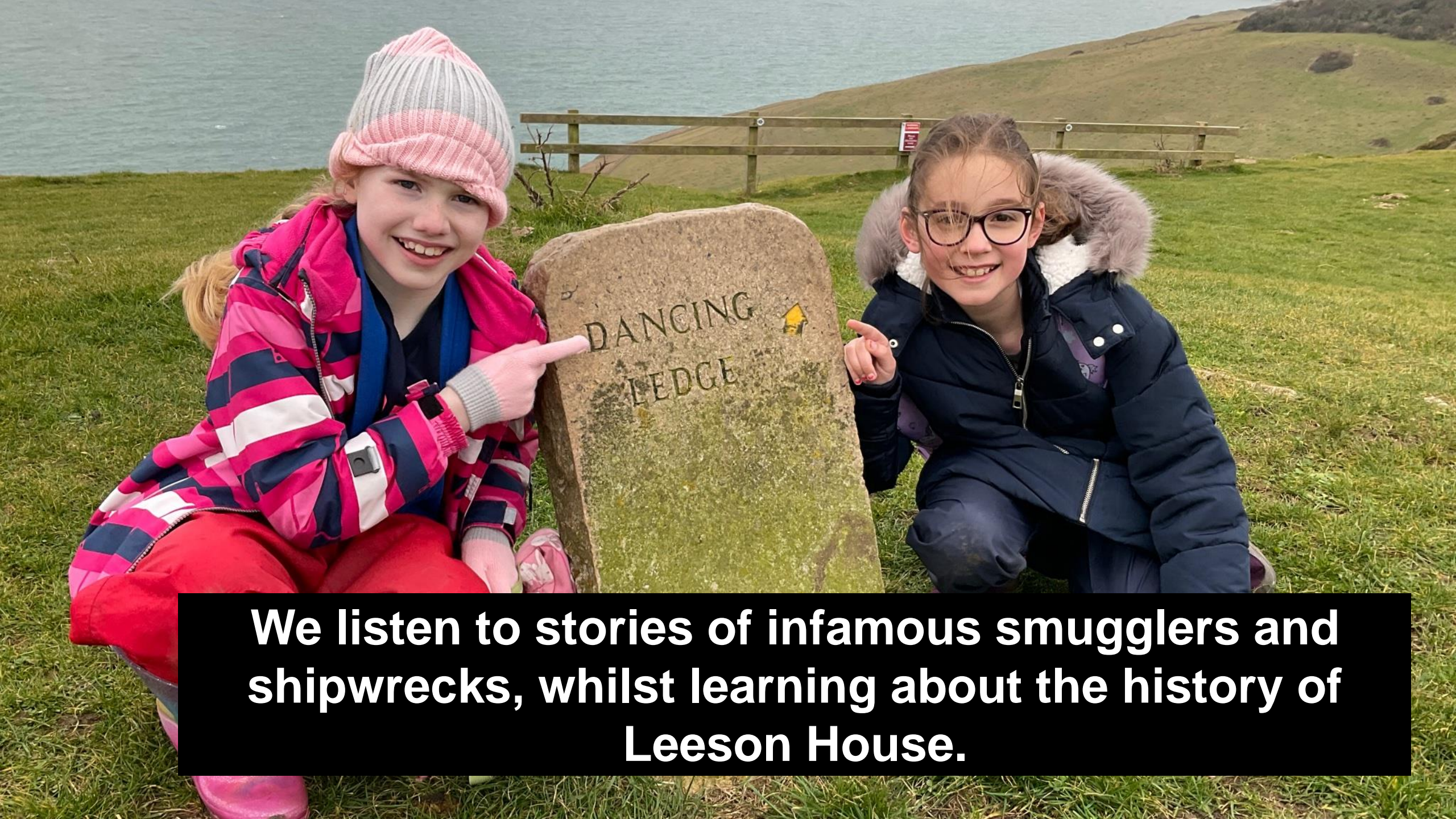
We depart school on Wednesday 12th June, at 9:00am, and arrive at Leeson at approx 12:00pm, after a short 'toilet stop' at Avon Heath.



Leeson House residential centre is situated near Swanage, on the Jurassic Coast World Heritage Site. The grounds are securely fenced and we are the only school on site during our stay.



**After lunch, we walk to the picture-postcard
Dancing Ledge. Appropriate clothing and footwear
is essential for this walk!**



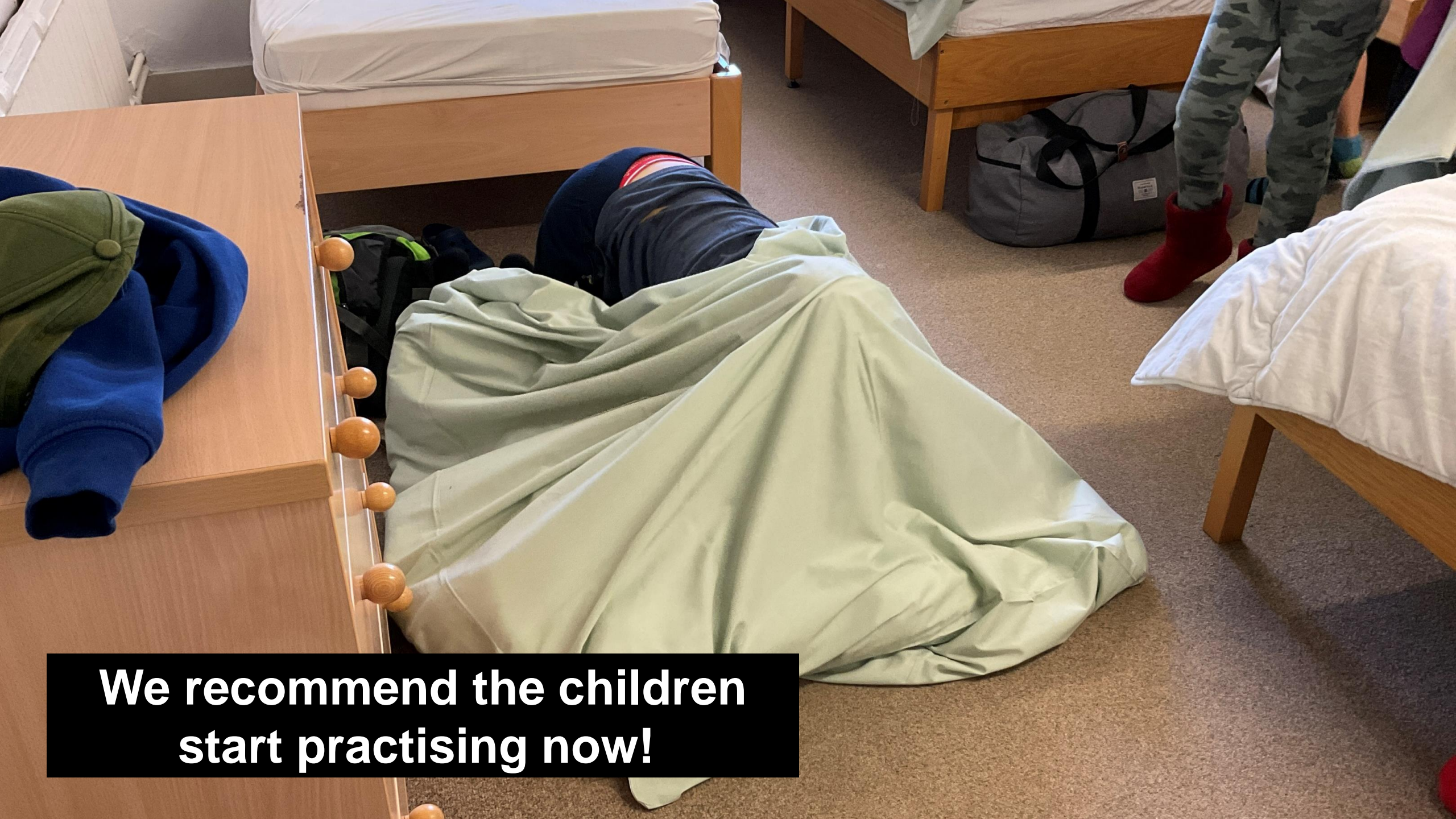
We listen to stories of infamous smugglers and shipwrecks, whilst learning about the history of Leeson House.



Upon returning to Leeson, the children are responsible for making their beds and keeping dormitories clean and tidy!



Rooms vary in sizes. Children will be asked who they would like to share a room with, and we will do our best to accommodate their requests.




**We recommend the children
start practising now!**



**When bedrooms have been made,
we then go down for dinner.**

Breakfast and dinner is eaten in the dining hall, where children set up and clear away before and after meals.



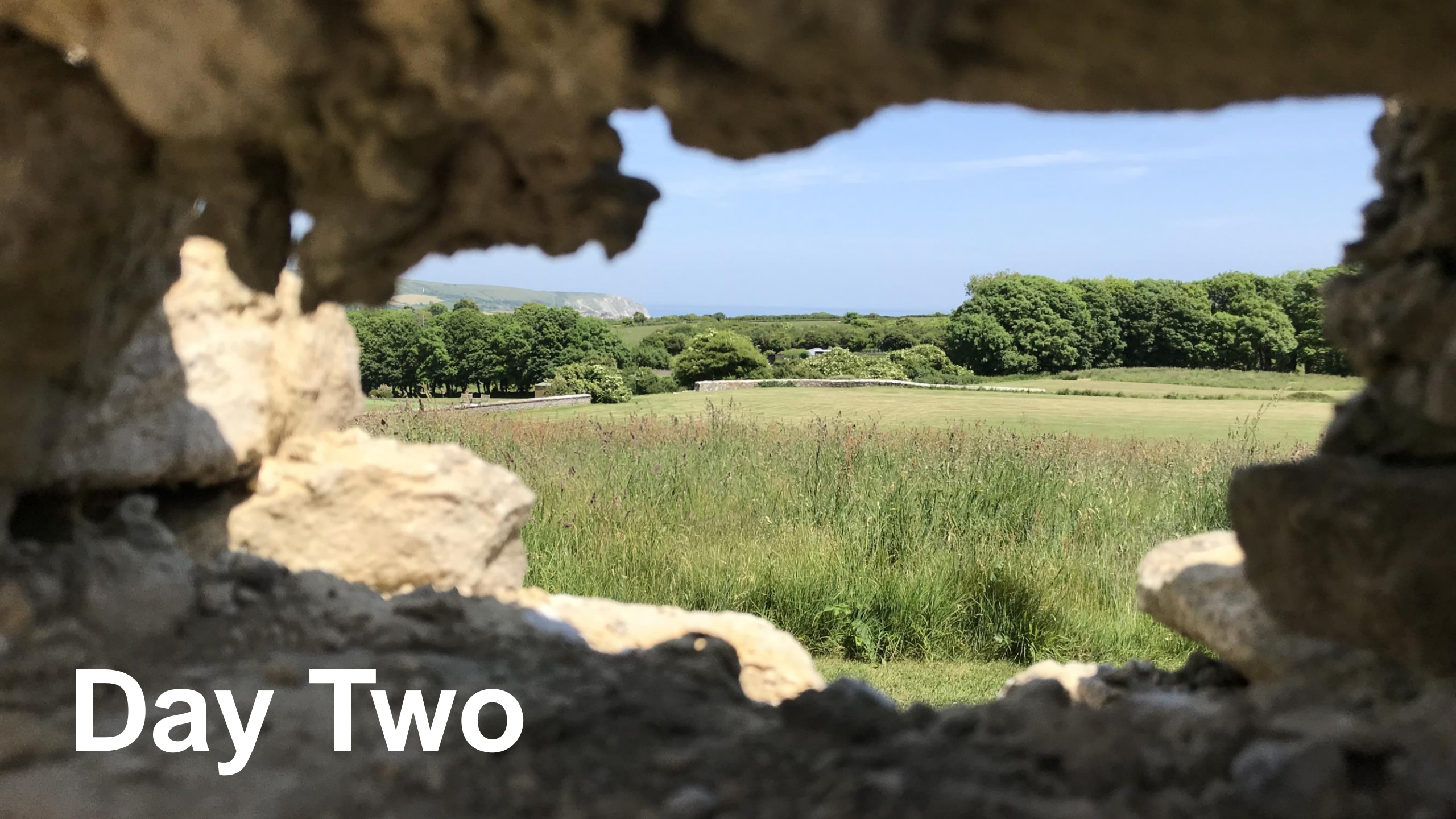
A group of approximately 15 children and one adult are standing in a vast, green field under a cloudy sky. The children are dressed in casual clothing, with many wearing blue hoodies. They are all looking towards the horizon where the sun is setting. The field is filled with tall grass and small yellow wildflowers. In the background, there are some trees and a distant hill.

After dinner, we go out on a night walk, watching the sun set and hearing more stories about Leeson.





**It will be a full-on day! Bedtime is approx. 9.00pm
and the children are ready to sleep!**



Day Two



**Breakfast is at
7.00am.**



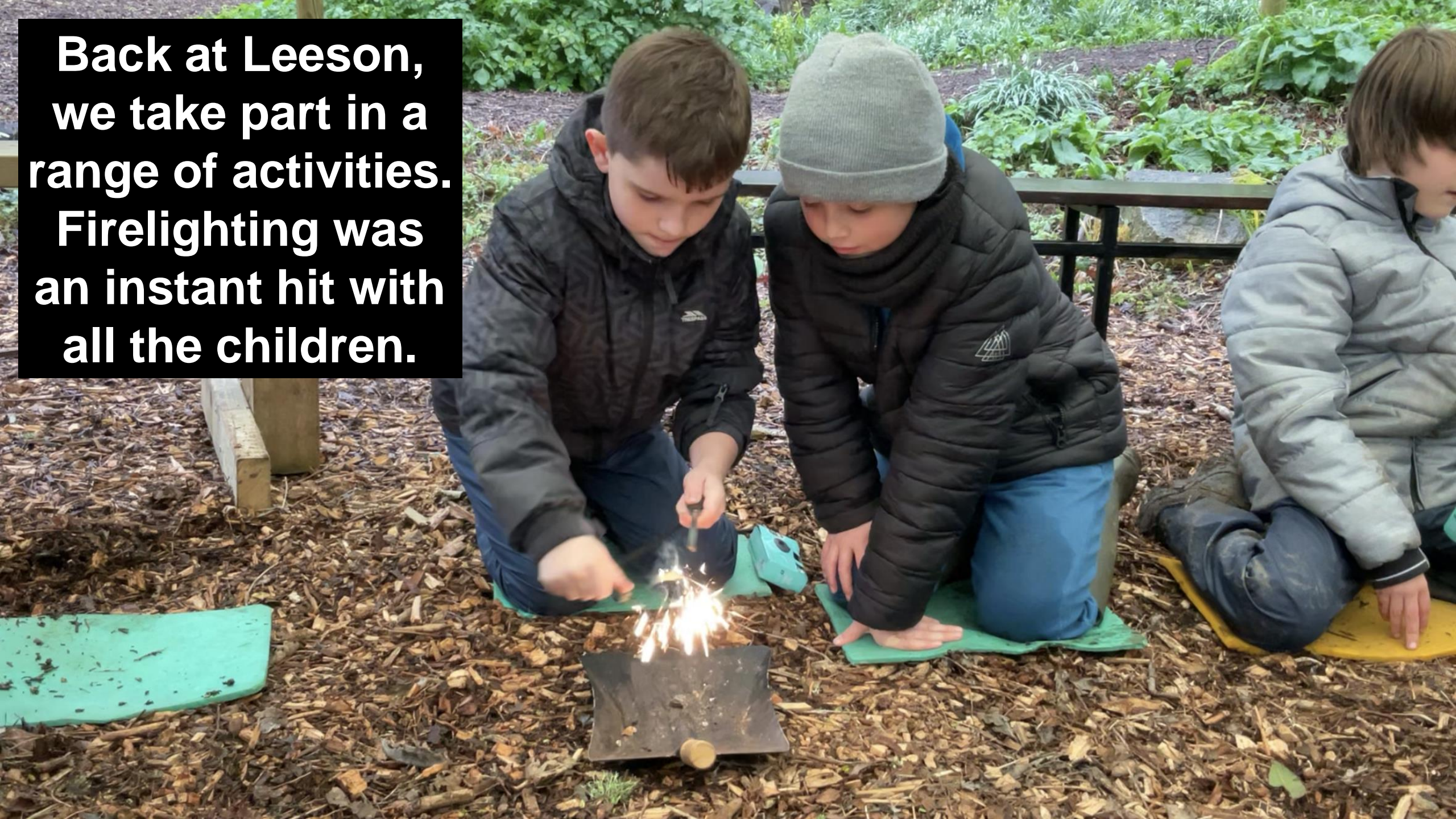
On day two, we take a short coach ride to the coastal site of Studland Beach.





We spend the morning at Studland learning about erosion and coastal landforms, sand dunes and wildlife.

**Back at Leeson,
we take part in a
range of activities.
Firelighting was
an instant hit with
all the children.**



The children also go pond dipping, catching weird and wonderful pond creatures to identify and study, with a focus on adaptations, life cycles or food chains.





A fully equipped classroom allows for children to look closely at wildlife and learn about adaptations, food chains, and habitats.





And some t-shirt designing.



Environmental Art allows the children to get close to the wildlife in the beautiful grounds of Leeson House.





The children have a little bit of down time and get to visit the shop.

In Orienteering, children learn how to 'orientate' your map and use it to find all the markers around the grounds.



Green and White
Orienteering Course

1		7
2		8
3		9
		10
5		11
6		12



**This was made even more interesting when
completing it at night!**





The children are certainly ready for bed now!



Day Three



On the last day, the children are responsible for tidying their rooms.



There is just enough time to do some team games too!



We will leave for home approx. 1.00pm.

Before departure...

Any additional information/ concerns about your child please email info@frimley.surrey.sch.uk

Spending money:

- Spending money, up to £5, must also be handed in to the office.

Medication

- Check dates on all medicines.
- Please ensure they are clearly labelled.
- Medication needs to be handed in to the office prior to the departure day.
- Children who use 'reliever' inhalers will need to have them with them at all times.

Day of departure...

- Labelled school hoodie/jumper (to travel in).
- 1x small rucksack for hand luggage.
- Packed Lunch to eat on the first day, in a disposable bag.
- Water in a refillable bottle.
- Waterproof footwear or warm walking shoes.

Main kit list

All items must be labelled clearly

- 1x holdall / suitcase or large rucksack.
- Bin liner for wet or dirty clothes.
- Toiletries in wash bag – soap, toothbrush, toothpaste, hairbrush.
- 2x towels (1 x hand, 1 x bath).
- Torch.
- Teddy bear.
- Footwear: comfortable outdoor shoes e.g. trainers or walking boots.
- Clean indoor shoes/slippers.
- Pyjamas.
- Underwear & Socks - a few extra pairs in case of bad weather.
- Tops & Jumpers (3x of each).
- Trousers – 4 pairs of trousers (mix of jeans and joggers).

Weather dependent...

- Warm/waterproof coat.
- Wellingtons.
- Waterproof trousers.
- Hat, gloves and scarf.
- Sun-cream.

Do not bring...

- Jewellery.
- Mobile phones.
- Electronic devices.
- Sweets.
- Snacks.

To contact us:

- Phone: during school hours 01252 835440
- Email: info@frimley.surrey.sch.uk

For us to contact you:

- We need contact numbers for 3 different people whom we could contact in an emergency.

- Additional information about the Leeson House Field Centre is available online at www.leesonhouse.com
- Any additional information/ concerns about your child please email info@frimley.surrey.sch.uk



Follow our #LeesonAdventure24 on

